

## Influenza Surveillance Update\*

Week ending: **4/12/2014** CDC MMWR week: **15**

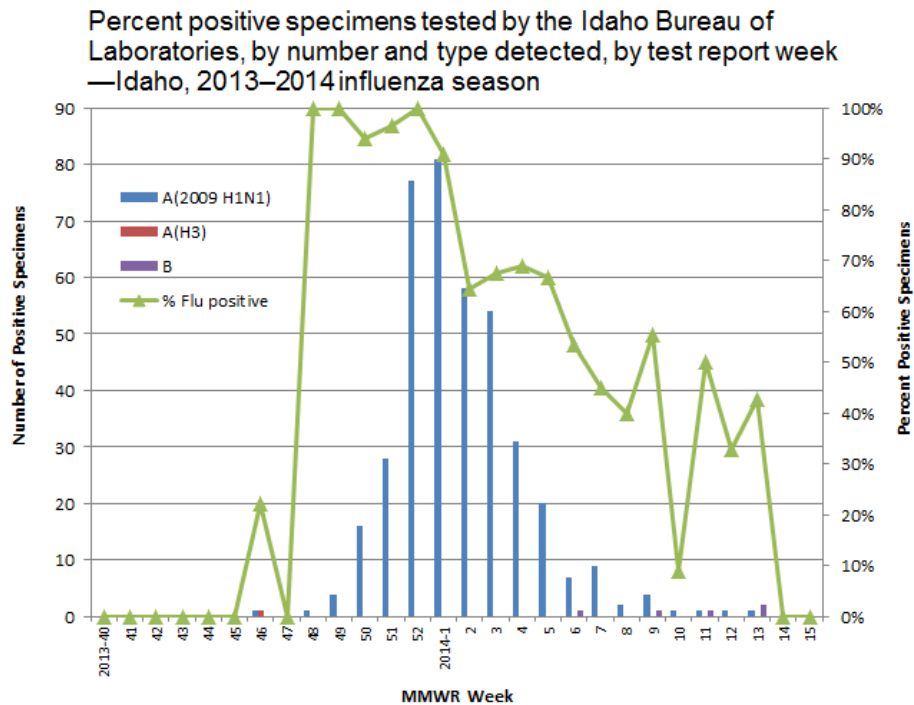
### Synopsis

- The 2013–2014 influenza season is effectively over.
- From 10/1/2013 to 4/12/2014: 555 specimens were tested by the Idaho Bureau of Laboratories (IBL); of those 403 (72.6%) were positive for influenza.
- From 10/1/2013 to 4/12/2014 , there have been 18 influenza-associated deaths in Idaho

### Laboratory Data

From 10/1/2013 to 4/12/2014 IBL reported results on 555 respiratory specimens; 403 (72.6%) were positive for influenza; 397 (98.5%) were influenza A 2009(H1N1), 1 (0.25%) was influenza A(H3), and 5 (1.2%) were influenza B. Details on the number and type of influenza detected, as well as the percent of specimens testing positive, by test report week, are shown in Figure 1.

NOTE: 83% of samples tested by IBL were pre-screened by rapid influenza test, prior to shipment to IBL; 81% of those testing positive at IBL, were rapid-test positive at the point

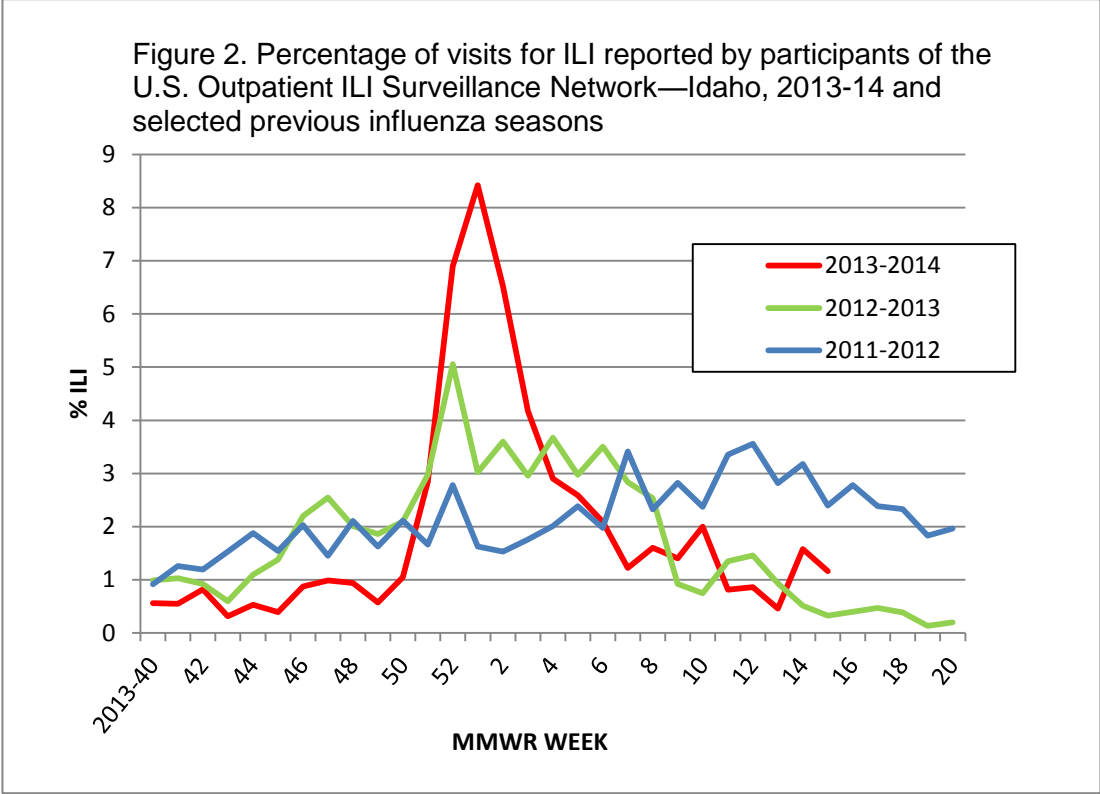


of care.

## Outpatient Surveillance Data

Data on outpatient visits to health care providers for influenza-like illness (ILI) are collected through the Centers for Disease Control and Prevention’s (CDC) U.S. Outpatient Influenza-like Illness Surveillance Network (ILINet). ILI is defined as fever (temperature of 100°F [37.8°C] or greater) and a cough and/or a sore throat without a KNOWN cause other than influenza. A small number of healthcare providers participate from each state to provide weekly situational awareness on influenza geographic distribution and level of activity. The enrolled Idaho providers enter information on ILI activity from different geographic locations around the state. Data collected include the total number of patients seen, for any reason, and the number of those patients specifically seen for ILI reported by age group (0–4 years, 5–24 years, 25–49 years, 50–64 years, and ≥ 65 years). The percentage of weekly visits to Idaho ILINet providers for ILI during the 2013–2014 influenza season are compared with weekly visits during the 2011–2012 and 2012–2013 influenza seasons in Figure 2.

Visit <http://www.cdc.gov/flu/weekly/overview.htm> to learn more about ILINet.



## Mortality Data

Information regarding influenza-associated deaths is reviewed weekly during the influenza season. The number and age groups affected provide information on populations most affected. Only deaths occurring in Idaho are reported in Table 1; data include deaths in Idaho of residents and non-residents. Deaths occurring in Idaho residents while out-of-state are not shown here. Data shown in Table 1 may differ from statistics based on Idaho resident records, data based on underlying cause of death only, and data based on calendar year. Deaths are considered Influenza-related based on ICD coding for Influenza in Part I and Part II on the Death Certificate. Influenza may have been the underlying cause of death or contributed to death. Table 2 lists the number of Idaho deaths recorded during recent influenza seasons.

**Table 1. Influenza-related deaths occurring in Idaho during the 2013-2014 influenza season, by age group, and public health district of residence\***

Residence	Total	Age		
		<18 yrs	18-49 yrs	50+ yrs
Panhandle Health District (PHD-1)	3	-	-	3
North Central Health District (PHD-2)	-	-	-	-
Southwest District Health (PHD-3)	2	-	-	2
Central District Health Department (PHD-4)	1	-	1	-
South Central Public Health (PHD-5)	3	-	-	3
Southeastern Idaho Public Health (PHD-6)	3	-	-	3
Eastern Idaho Public Health District (PHD-7)	4	-	-	4
Non-resident	2	-	-	2
Total	18	-	1	17

\*Week ending 3/21/2014

Source: Bureau of Vital Records and Health Statistics, Idaho Department of Health and Welfare  
 Link to Idaho Public Health Districts: <http://www.healthandwelfare.idaho.gov/?TabId=97>

<b>Table 2. Influenza-associated death counts, by past influenza seasons—Idaho, 2009 through 2013</b>	
Influenza season	Influenza-associated deaths
2012–2013	35
2011–2012	5
2010–2011	21
2009–2010	22

To return to the influenza home page: <http://flu.idaho.gov>

*This page is generated by the Idaho Department of Health and Welfare Bureau of Communicable Disease Prevention, and will be updated regularly during the influenza season (Oct 1 to May 1). Additional postings might occur during an unusually early, late, or prolonged season.*