

National Immunization Survey–Teen Data for United States and Idaho 2008 through 2013

	≥1 Td or Tdap						≥1 Tdap						≥1 MenACWY						≥2 VAR					
	CI			CI			CI			CI			CI			CI			CI					
	U.S.	-	+	Idaho	-	+	U.S.	-	+	Idaho	-	+	U.S.	-	+	Idaho	-	+	U.S.	-	+	Idaho	-	+
2008, n=268	72.2	1.4	1.2	51.3	6.5	6.7	40.8	1.5	1.4	31.7	6.0	6.6	41.8	1.5	1.4	29.9	5.8	6.6	34.1	2.3	2.4	25.6	9.1	11.8
2009, n=227	76.2	1.1	1.0	61.4	7.9	7.3	55.6	1.3	1.2	38.6	7.2	7.7	53.6	1.2	1.3	34.2	6.9	7.6	48.6	2.0	2.0	25.6	9.1	11.8
2010, n=318	81.2	0.9	1.0	58.0	6.2	6.0	68.7	1.2	1.1	49.2	6.2	6.1	62.7	1.2	1.2	40.8	5.8	6.2	58.1	1.7	1.7	42.8	9.7	10.2
2011, n=385	85.3	0.8	0.8	63.3	7.0	7.0	78.2	0.9	0.9	58.3	7.1	7.1	70.5	1.0	1.0	50.5	7.2	7.2	68.3	1.4	1.4	49.9	10.7	10.7
2012, n=357	88.5	0.8	0.8	70.7	5.8	5.8	84.6	0.9	0.9	64.5	6.1	6.1	74.0	1.1	1.1	63.2	6.3	6.3	74.9	1.4	1.4	57.0	8.7	8.7
2013, n=272	89.1	0.9	0.9	82.5	5.9	5.9	86.0	0.9	0.9	74.6	6.6	6.6	77.8	1.1	1.1	71.6	7.0	7.0	78.5	1.3	1.3	63.8	9.4	9.4

	≥1 HPV vaccine (females)						≥2 HPV vaccine (females)						≥3 HPV vaccine (females)					
	CI			CI			CI			CI			CI			CI		
	U.S.	-	+	Idaho	-	+	U.S.	-	+	Idaho	-	+	U.S.	-	+	Idaho	-	+
2008, n=UNK	37.2	2.1	2.1	28.4	7.9	9.6							17.9	1.6	1.7	8.0	3.6	6.1
2009, n=UNK	44.3	1.9	1.8	30.2	9.2	11.2							26.7	1.5	1.5	16.9	6.9	10.3
2010, n=UNK	48.7	1.8	1.8	28.8	7.2	8.5							32.0	1.8	1.6	17.6	5.8	7.8
2011, n=176	53.0	1.7	1.7	45.5	10.5	10.5							34.8	1.6	1.6	30.0	9.8	9.8
2012, n=173	53.8	1.9	1.9	51.3	9.5	9.5	43.4	1.9	1.9	41.6	9.6	9.6	33.4	1.7	1.7	27.8	8.2	8.2
2013, n=124	57.3	1.9	1.9	55.0	10.6	10.6	47.7	2.0	2.0	45.8	10.5	10.5	37.6	1.9	1.9	31.3	9.6	9.6

	≥1 HPV vaccine (males)						≥2 HPV vaccine (males)						≥3 HPV vaccine (males)					
	CI			CI			CI			CI			CI			CI		
	U.S.	-	+	Idaho	-	+	U.S.	-	+	Idaho	-	+	U.S.	-	+	Idaho	-	+
2008, n=0																		
2009, n=0																		
2010, n=0																		
2011, n=209	8.3	1.0	1.0										1.3	0.3	0.3			
2012, n=184	20.8	1.5	1.5	16.2	7.5	7.5	12.7	1.3	1.3				6.8	1.0	1.0			
2013, n=148	34.6	1.9	1.9	34.5	10.2	10.2	23.5	1.7	1.7	21.6	8.8	8.8	13.9	1.4	1.4			

	3-dose HPV vaccination series completion (females)						3-dose HPV vaccination series completion (males)					
	CI			CI			CI			CI		
	U.S.	-	+	Idaho	-	+	U.S.	-	+	Idaho	-	+
2008, n=UNK												
2009, n=UNK												
2010, n=UNK	69.6	2.8	2.6	66.1	16.6	13.5						
2011, n=UNK	70.7	2.3	2.3	73.3	12.7	12.7	28.1	6.5	6.5			
2012, n=UNK	66.7	2.6	2.6	62.0	16.6	16.6	45.1	5.0	5.0			
2013, n=UNK	70.4	2.5	2.5	58.1	14.5	14.5	48.3	4.0	4.0			

Glossary of Abbreviations and Terms

Hep A	Hepatitis A
Hep B	Hepatitis B
HPV	Human papillomavirus
MenACWY	Meningococcal conjugate vaccine
NCHS	National Center for Health Statistics
NIS	National Immunization Survey
NIS-Teen	National Immunization Survey - Teen
Td	Tetanus and diphtheria vaccine
Tdap	Tetanus, diphtheria, and acellular pertussis vaccine
UNK	Unknown
VAR	Varicella vaccine

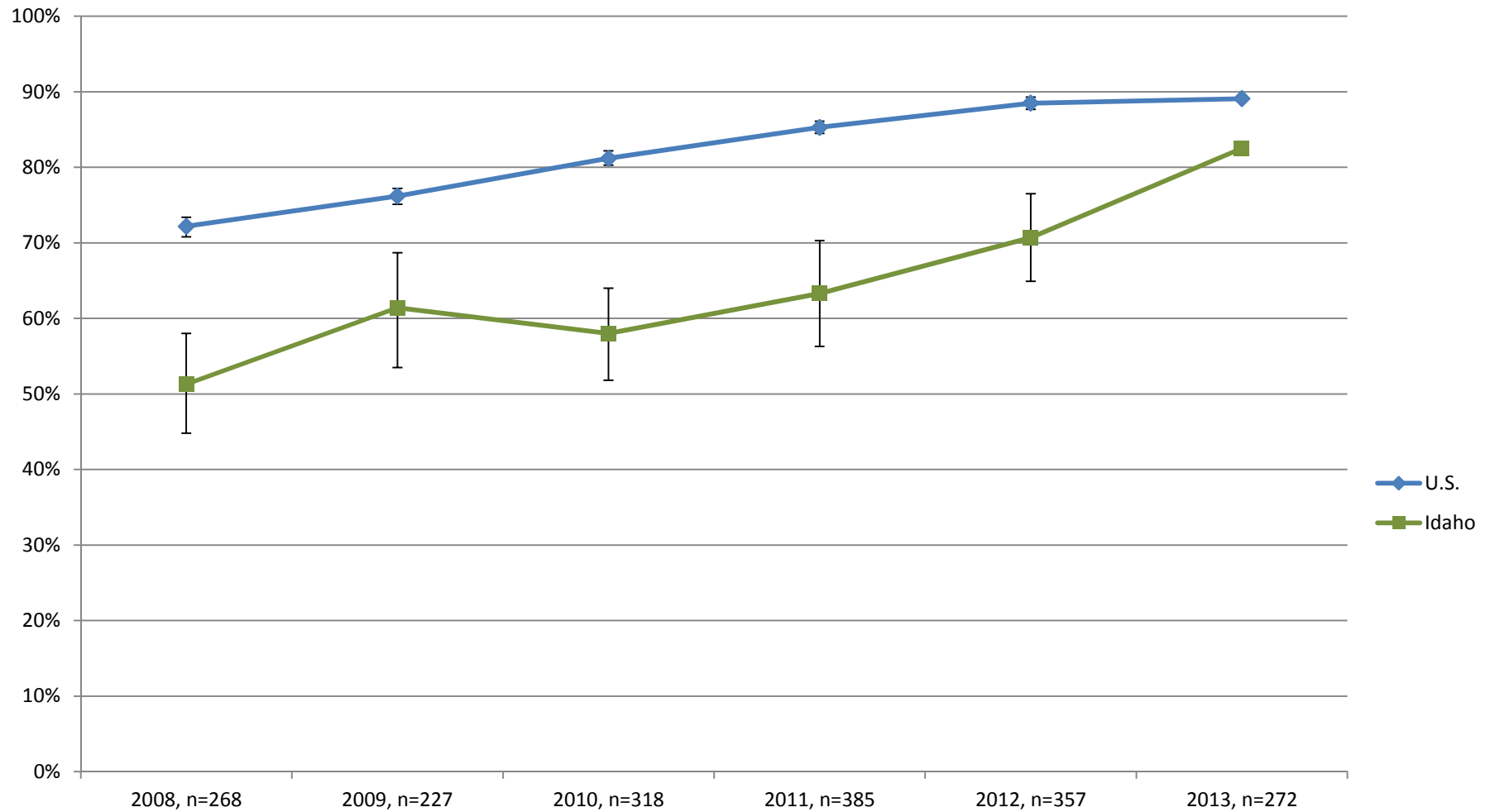
Idaho data points in **BOLD** indicate a statistically significant change compared to the previous year, p=0.05

Blue cells indicate NIS did not collect data during that year

Brown cells indicate data collected for Idaho was insufficient to determine point estimate

CI = Confidence Interval

≥1 Td or Tdap* Vaccination Coverage 2008–2013†



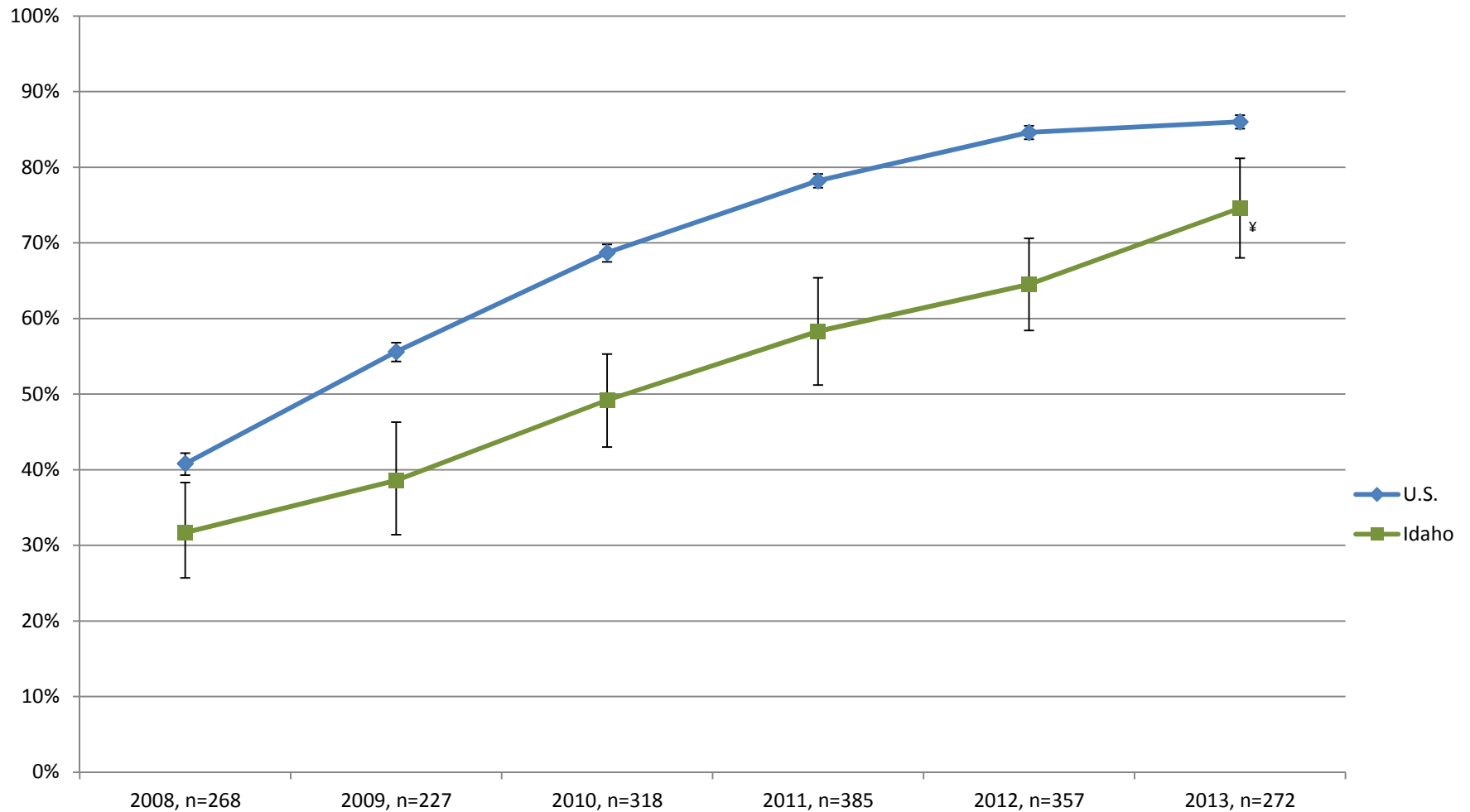
* Refers to ≥1 dose of tetanus toxoid-diphtheria vaccine (Td) or tetanus toxoid, reduced diphtheria toxoid, and acellular pertussis (Tdap) since the age of ten years

† From the National Immunization Survey (NIS)-Teen, adolescents aged 13 through 17 years

n = number of adolescents sampled for each survey year in Idaho

Vertical bars above and below each point estimate indicate the 95% confidence interval

≥1 Tdap* Vaccination Coverage 2008–2013†



* Refers to ≥1 dose of tetanus toxoid, reduced diphtheria toxoid, and acellular pertussis (Tdap) since the age of ten years

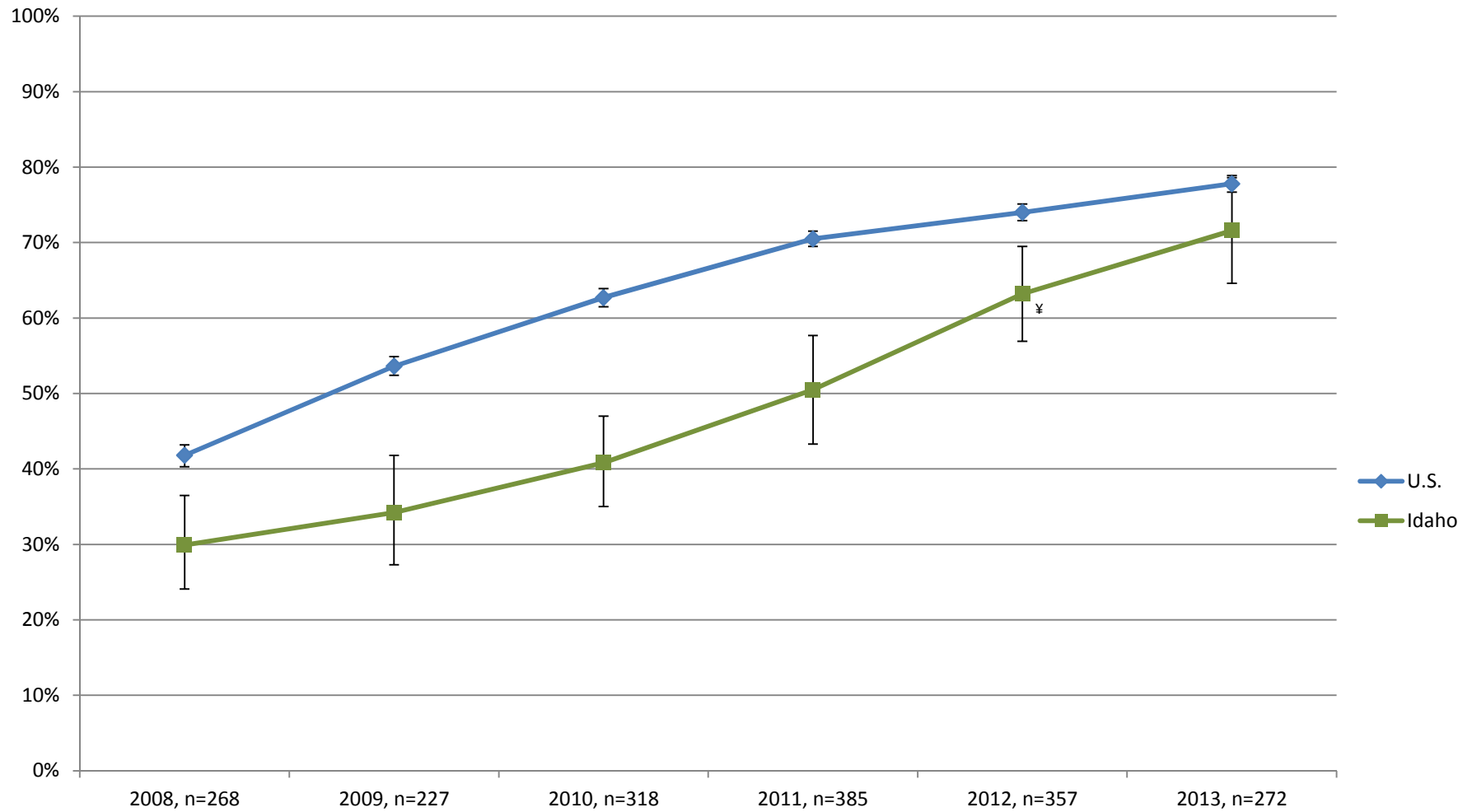
† From the National Immunization Survey (NIS)-Teen, adolescents aged 13 through 17 years

‡ Refers to a statistically significant change compared to the previous year, $p=0.05$

n = number of adolescents sampled for each survey year in Idaho

Vertical bars above and below each point estimate indicate the 95% confidence interval

≥1 MenACWY* Vaccination Coverage 2008–2013†



* Refers to ≥1 dose of meningococcal conjugate vaccine or meningococcal vaccine of unknown type

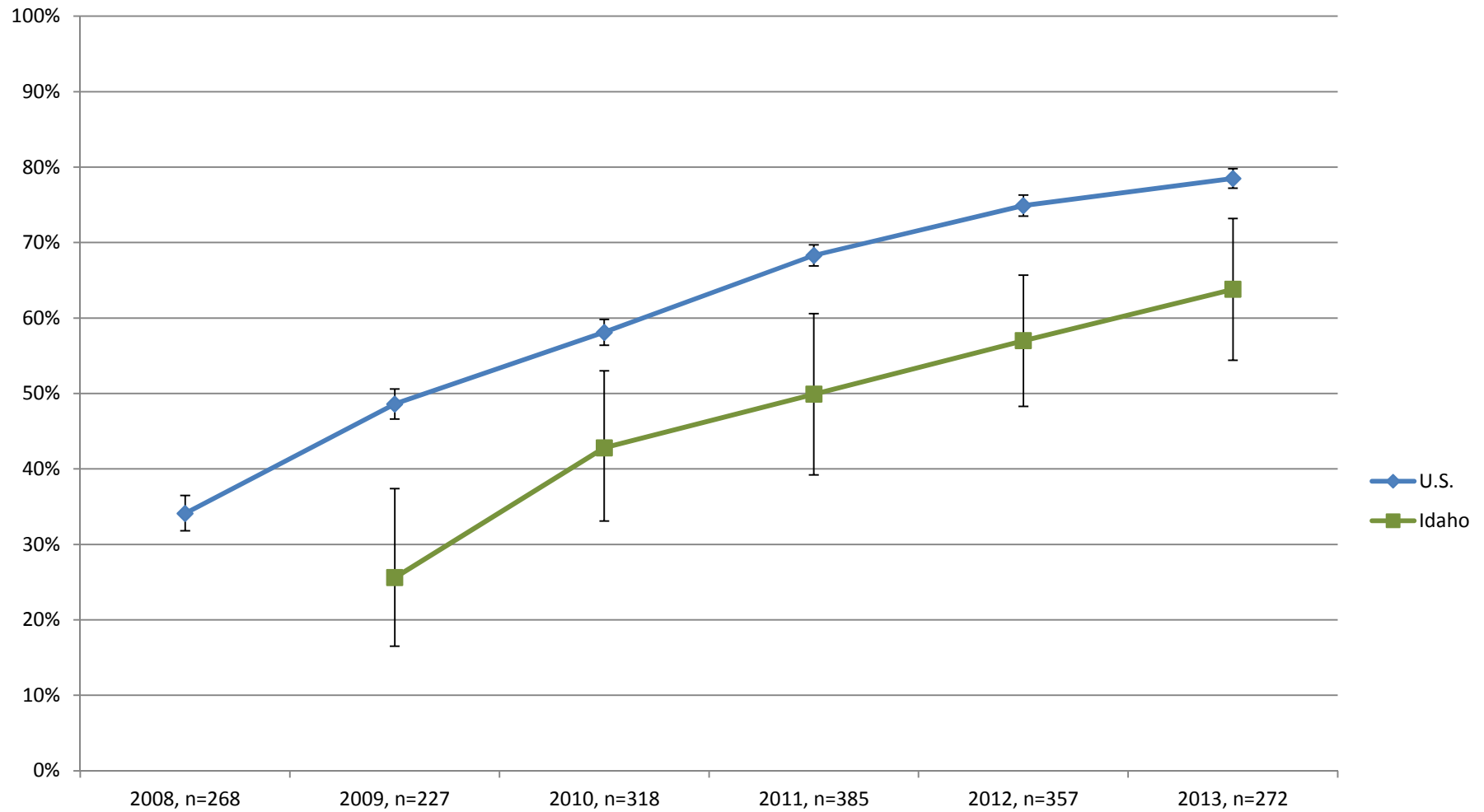
† From the National Immunization Survey (NIS)-Teen, adolescents aged 13 through 17 years

‡ Refers to a statistically significant change compared to the previous year, $p=0.05$

n = number of adolescents sampled for each survey year in Idaho

Vertical bars above and below each point estimate indicate the 95% confidence interval

≥2 Var* Vaccination Coverage, 2008–2013^{†§}



* Refers to 2 or more doses of varicella vaccine, if there is no history of disease

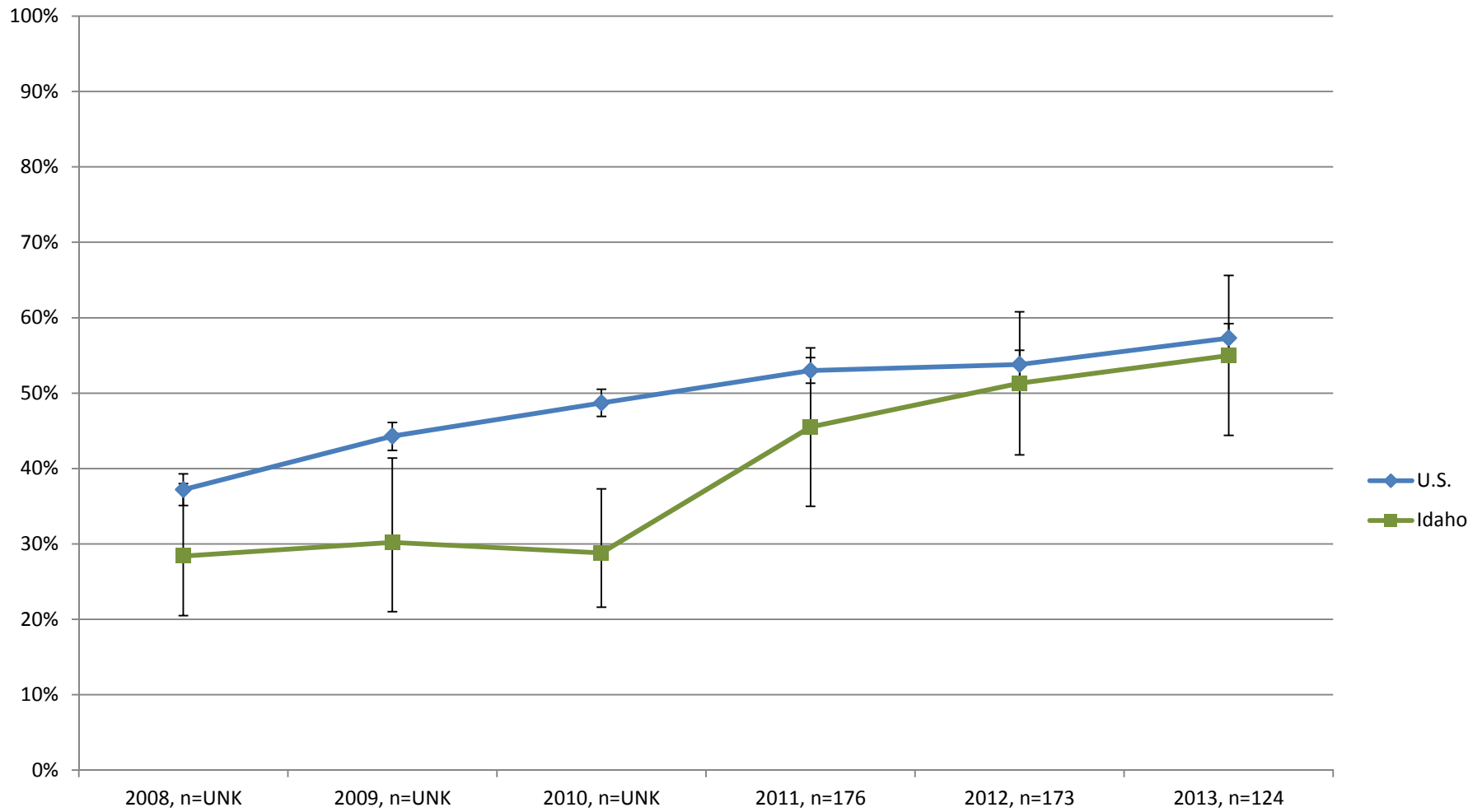
[†] From the National Immunization Survey (NIS)-Teen, adolescents aged 13 through 17 years

[§] This series began national sampling in 2008, data collected for Idaho was insufficient to determine point estimate prior to 2009

n = number of adolescents sampled for each survey year in Idaho

Vertical bars above and below each point estimate indicate the 95% confidence interval

≥1 HPV* Female Vaccination Coverage 2008–2013†



* Refers to ≥1 dose of human papillomavirus vaccine, either quadrivalent or bivalent, females only

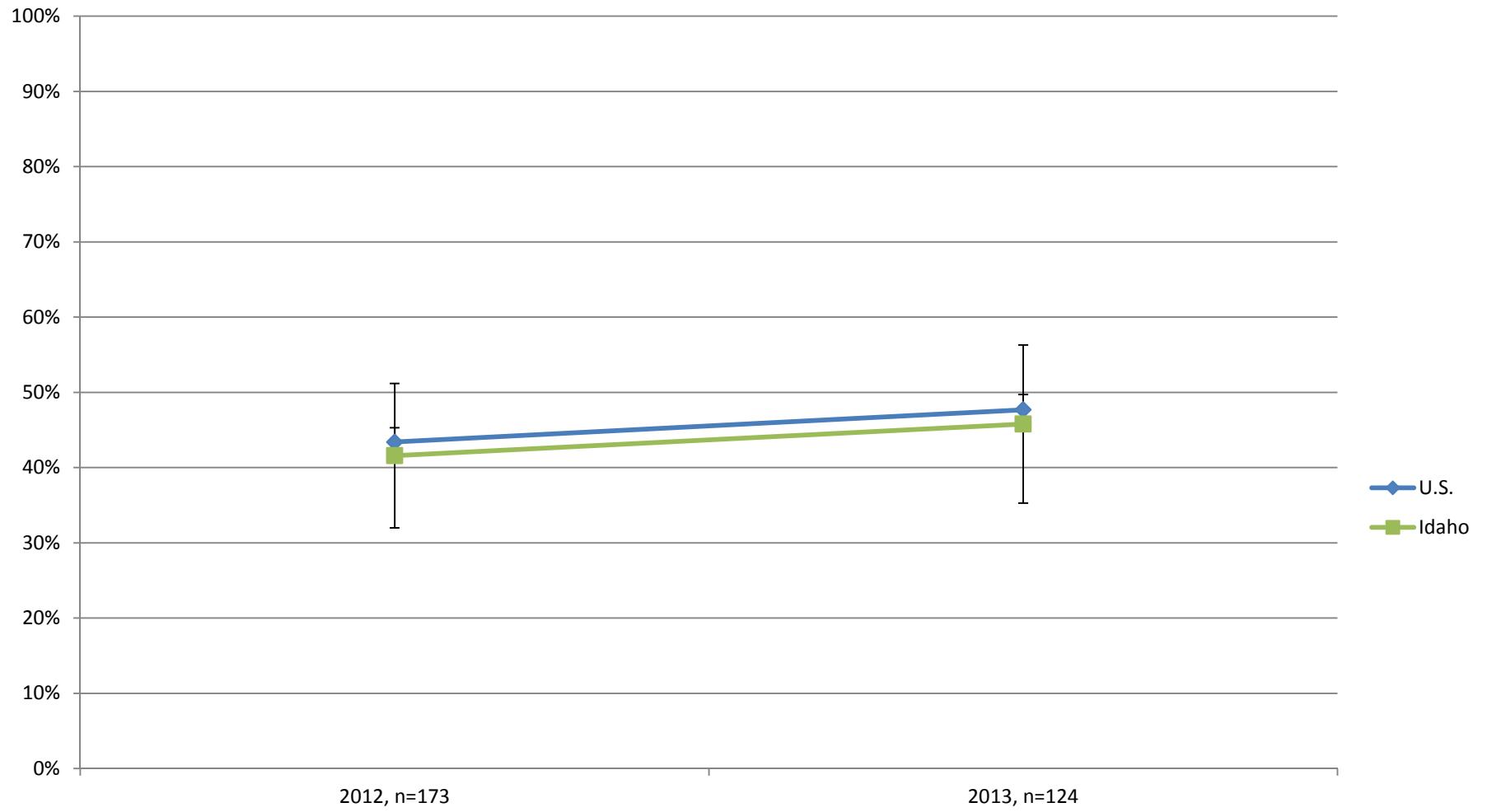
† From the National Immunization Survey (NIS)-Teen, adolescents aged 13 through 17 years

n = number of adolescents sampled for each survey year in Idaho

UNK=Unknown

Vertical bars above and below each point estimate indicate the 95% confidence interval

≥2 HPV* Female Vaccination Coverage 2012–2013^{†§}



* Refers to ≥2 dose of human papillomavirus vaccine, either quadrivalent or bivalent, females only

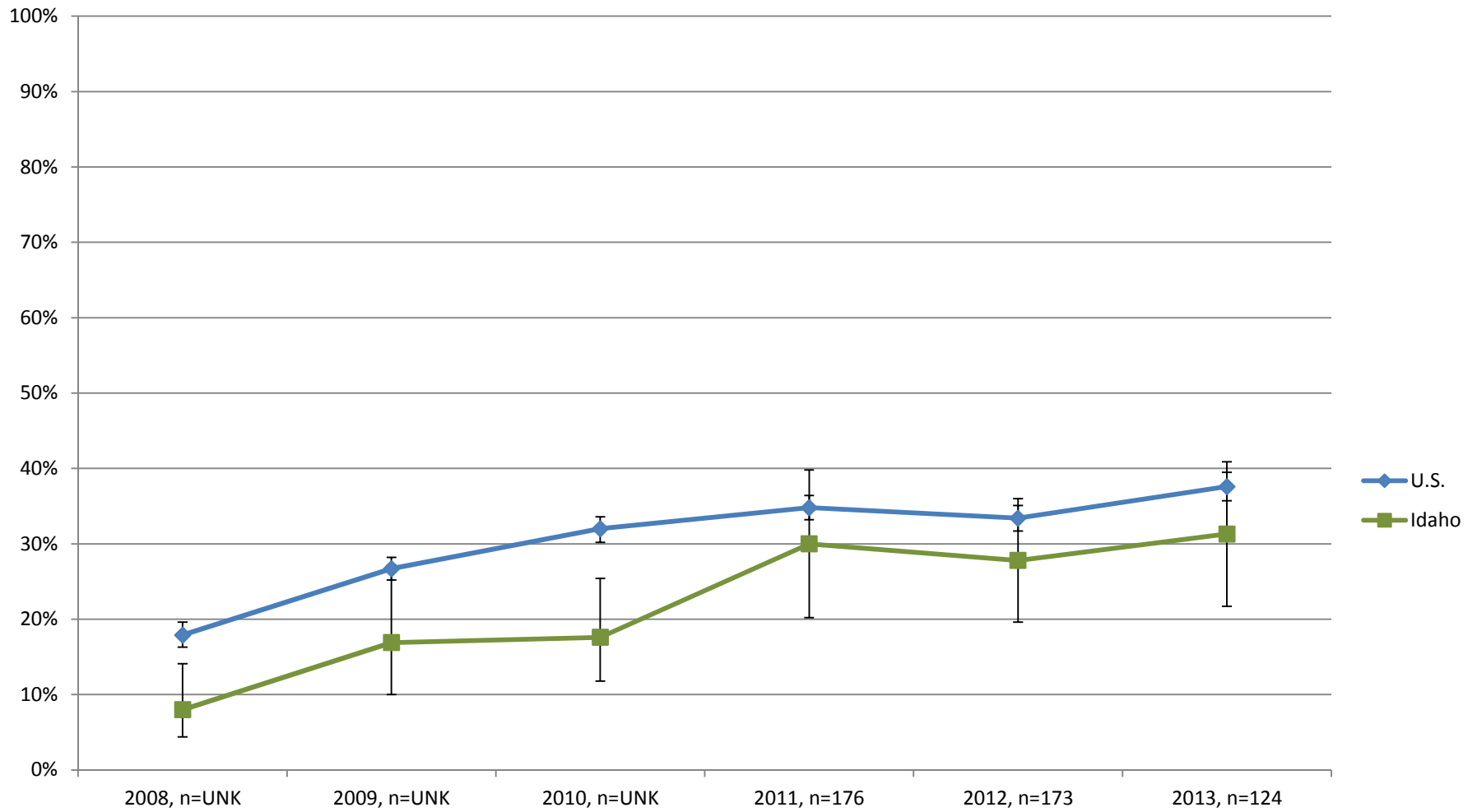
[†] From the National Immunization Survey (NIS)-Teen, adolescents aged 13 through 17 years

[§] This series sampling began in 2012

n = number of adolescents sampled for each survey year in Idaho

Vertical bars above and below each point estimate indicate the 95% confidence interval

≥3 HPV* Female Vaccination Coverage 2008–2013†



* Refers to 3 doses of human papillomavirus vaccine, either quadrivalent or bivalent, females only

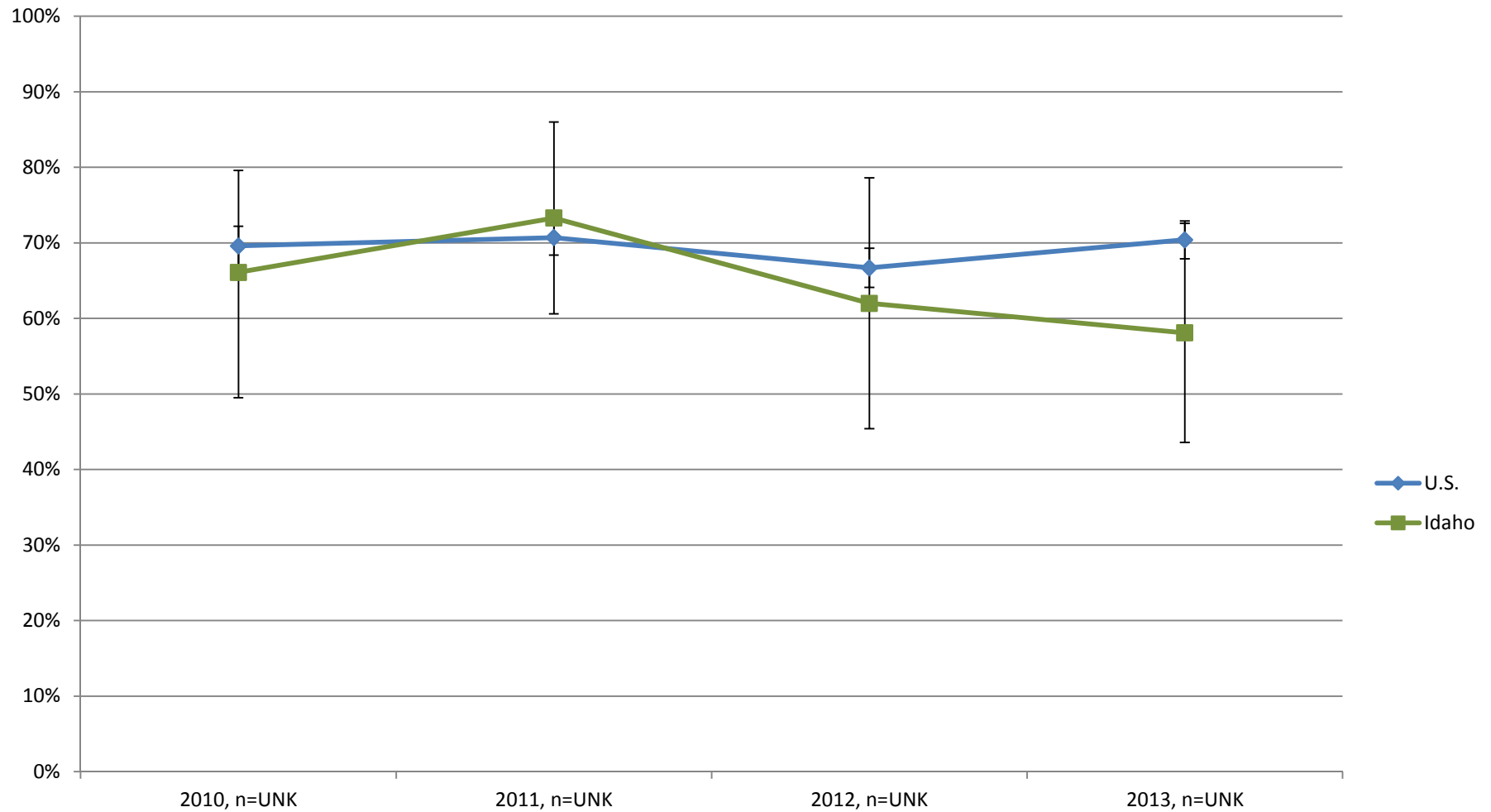
† From the National Immunization Survey (NIS)-Teen, adolescents aged 13 through 17 years

n = number of adolescents sampled for each survey year in Idaho

UNK=Unknown

Vertical bars above and below each point estimate indicate the 95% confidence interval

3-dose HPV* Vaccination Series Completion among Females 2010–2013^{†§}



* Refers to percent of females who received 3 doses among those who had at least 1 dose human papillomavirus vaccine, either quadrivalent or bivalent, with at least 24 weeks between the first dose and the interview date

[†] From the National Immunization Survey (NIS)-Teen, adolescents aged 13 through 17 years

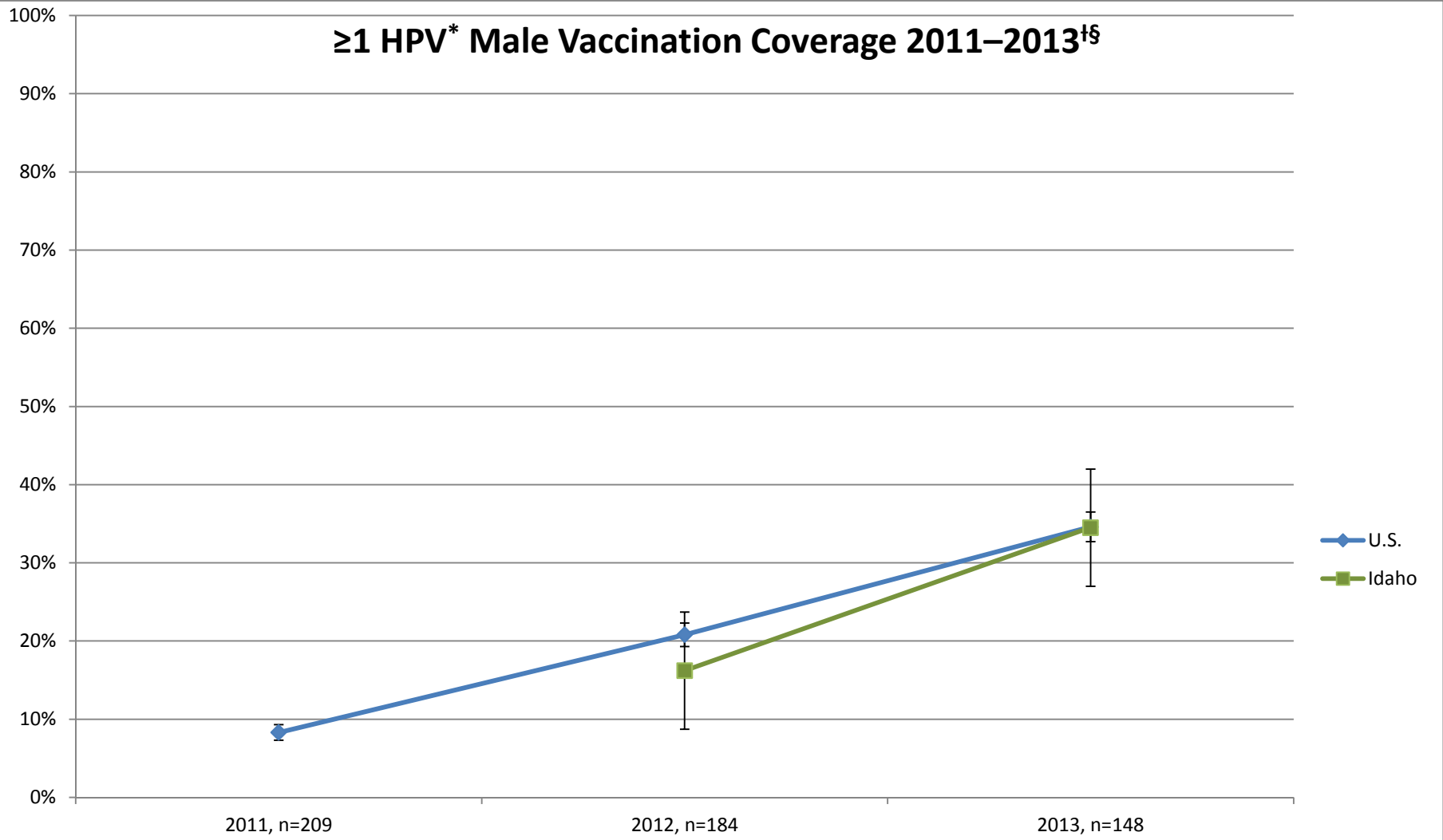
[§] This series sampling began in 2010

UNK=Unknown

n = number of adolescents sampled for each survey year in Idaho

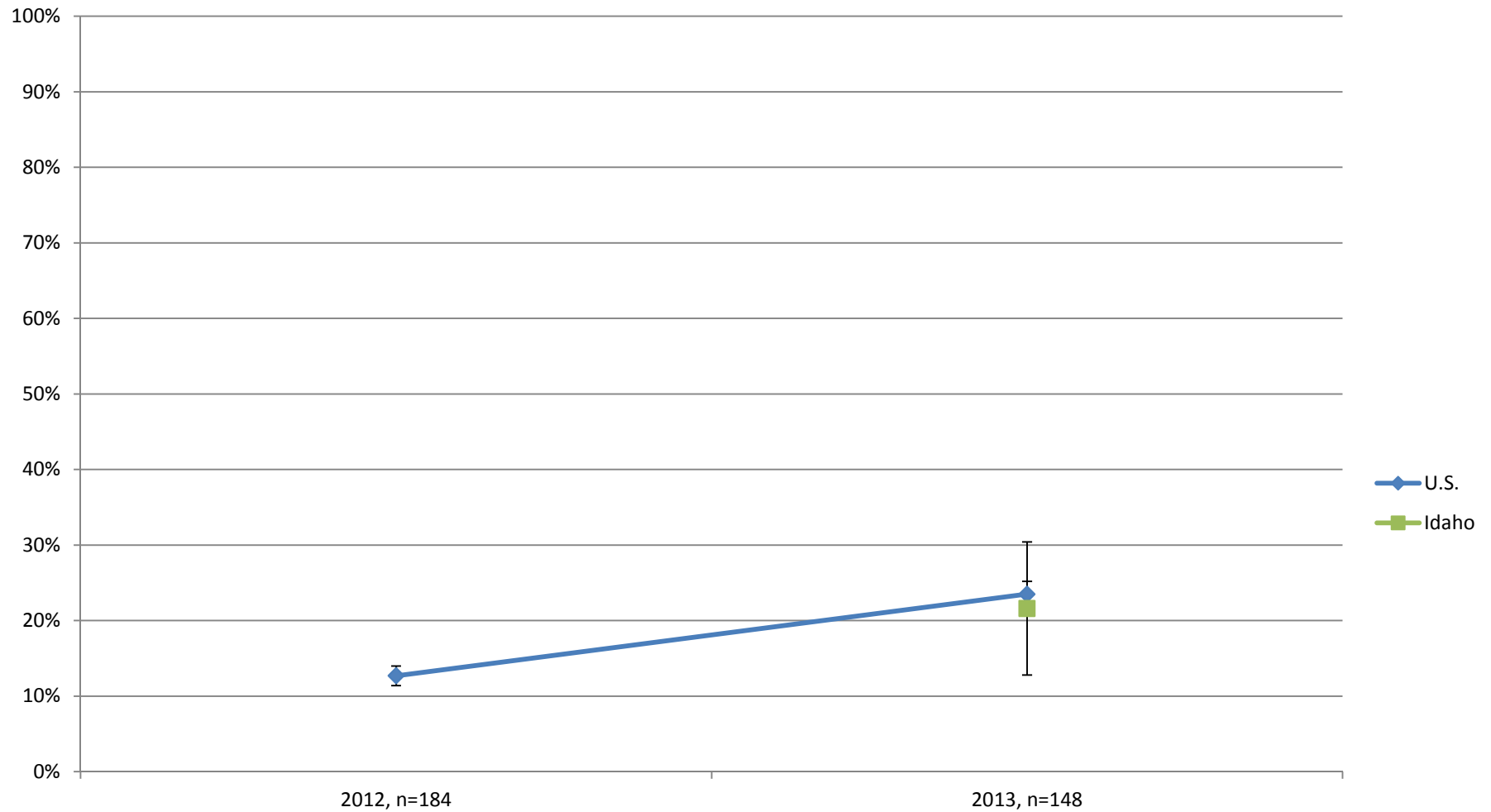
Vertical bars above and below each point estimate indicate the 95% confidence interval

≥1 HPV* Male Vaccination Coverage 2011–2013^{†§}



* Refers to ≥1 dose of human papillomavirus vaccine, either quadrivalent or bivalent, males only
[†] From the National Immunization Survey (NIS)-Teen, adolescents aged 13 through 17 years
[§] This series began national sampling in 2011, data collected for Idaho was insufficient to determine point estimate prior to 2012
n = number of adolescents sampled for each survey year in Idaho
UNK=Unknown
Vertical bars above and below each point estimate indicate the 95% confidence interval

≥2 HPV* Male Vaccination Coverage 2012–2013^{†§}



* Refers to ≥2 dose of human papillomavirus vaccine, either quadrivalent or bivalent, males only

[†] From the National Immunization Survey (NIS)-Teen, adolescents aged 13 through 17 years

[§] This series began national sampling in 2012, data collected for Idaho was insufficient to determine point estimate prior to 2013

n = number of adolescents sampled for each survey year in Idaho

UNK=Unknown

Vertical bars above and below each point estimate indicate the 95% confidence interval